

# TOYOPEARL NH<sub>2</sub>-750F AGGREGATE REMOVAL FROM MONOCLONAL ANTIBODIES

Given the current drive to reduce the cost of manufacturing for biological therapeutics, it is incumbent upon chromatographers and process engineers to streamline the manufacturing process wherever possible. As a result of this need, the demands on downstream unit operations have increased to the point where a single processing step is expected to accomplish a multitude of purification objectives.

## INTRODUCTION

Anion exchange chromatography is a widely used technique for protein capture or impurity removal. Typically, anion exchange resins with quaternary amine or DEAE ligands are used. However, these more conventional resins have the disadvantage of reduced capacity for proteins in relatively high salt concentrations associated with post-protein A purification monoclonal antibodies (mAbs) or undiluted biological feedstock. In order to use a DEAE or quaternary amine resin at these process stages, the column load material must be diluted to adjust its conductivity to approximately 5 mS/cm. TOYOPEARL NH<sub>2</sub>-750F is a new salt tolerant anion exchange resin for process scale applications. This resin is based on the TOYOPEARL HW-75F size exclusion resin functionalized with primary amine groups. This allows the TOYOPEARL NH<sub>2</sub>-750F resin to maintain its capacity at conductivities up to 15 mS/cm. Table 1 lists the properties of the TOYOPEARL NH<sub>2</sub>-750F resin.

This new resin uses the same polymethacrylate backbone as all other TOYOPEARL chromatography resins. Thus, it has similar pressure-flow and chemical stability characteristics. TOYOPEARL NH<sub>2</sub>-750F resin is ideal for the intermediate purification of mAbs where aggregates and other impurities are removed from the target of interest without having to dilute or buffer exchange the product prior to loading.

## PROPERTIES OF TOYOPEARL NH<sub>2</sub>-750F

|                       |                        |
|-----------------------|------------------------|
| Particle size         | 30-60 µm               |
| Pore size             | > 100 nm               |
| Ion Exchange Capacity | 0.07 – 0.13 eq/L resin |
| Shipping buffer       | 20% ethanol            |
| SBC                   | ≥ 70 g/L resin         |

Table 1

## SEC ANALYSIS OF mAb PRIOR TO AGGREGATE REMOVAL BY TOYOPEARL NH<sub>2</sub>-750F

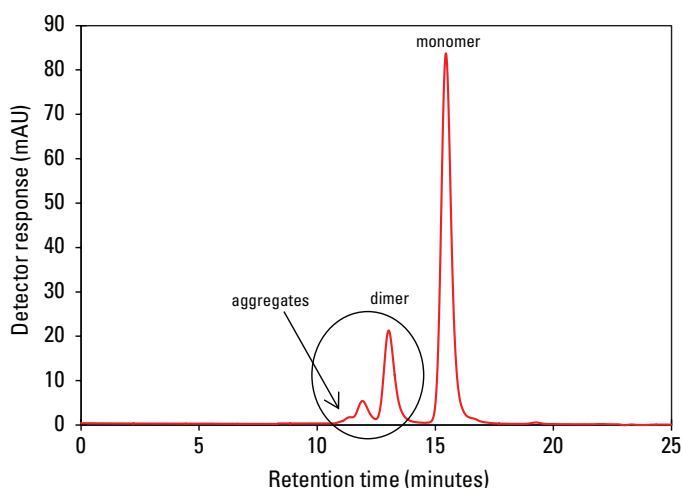


Figure 1

Column: TSKgel G3000SW<sub>xL</sub>, 7.8 mm ID × 30 cm L; Mobile phase: A. 0.1 mol/L sodium phosphate, 0.2 mol/L arginine, pH 6.8; Flow rate: 0.5 mL/min; Detection: UV @ 280 nm; Sample: mAb (IgG<sub>1</sub>), post protein A

The data presented here demonstrate the capabilities of TOYOPEARL NH<sub>2</sub>-750F to remove dimer and higher order aggregates from the monomer of a protein A purified IgG<sub>1</sub> monoclonal antibody.

## EXPERIMENTAL CONDITIONS/RESULTS

Figure 1 is a size exclusion chromatography analysis of an aliquot of the protein A purified IgG<sub>1</sub> mAb on a TSKgel® G3000SW<sub>xL</sub> column. This sample is representative of the material that will be loaded onto the TOYOPEARL NH<sub>2</sub>-750F column. In this figure, the presence of monomer, dimer, and higher order aggregates can be seen.

For the dimer/aggregate removal experiment, a 5 mm ID × 5 cm column was packed with TOYOPEARL NH<sub>2</sub>-750F resin. The column was equilibrated with 20 mmol/L Tris-HCl, pH 8.0 (mobile phase A) for 5 CV. A 0.5 g/L sample of protein A purified mAb (Ig<sub>1</sub>) was then loaded onto the column, and the column was washed with mobile phase A.

A 60 minute linear gradient from 0-100% mobile phase B (mobile phase A + 1.0 mol/L NaCl) was used to separate the mAb monomer (peak 1) from mAb dimer and aggregates (peak 2). The individual peaks were collected as fractions 1 and 2 (Figure 2). After elution, the column was sanitized using 0.5 mol/L NaOH.

The purified mAb monomer (fraction 1) and the mAb aggregate (fraction 2) peaks were analyzed by size exclusion chromatography using a TSKgel G3000SW<sub>XL</sub> column to verify the separation of dimer and aggregates from the mAb monomer. There was no dimer or higher order aggregate present in the mAb monomer peak, as can be seen in Figure 3. Analysis of the aggregate peak in Figure 4 does indicate that a small amount of mAb monomer was co-eluted with the dimer and aggregates in this experiment.

## CONCLUSIONS

TOYOPEARL NH<sub>2</sub>-750F is an effective anion exchange resin for the removal of dimer and higher order aggregates from mAb monomer in a protein A purified antibody without the need for sample dilution or buffer exchange. Though some monomer was co-eluted with the dimer and aggregates in this experiment, further method development may reduce the amount of carryover and increase product yield in the monomer peak.

### PURIFICATION OF mAb ON TOYOPEARL NH<sub>2</sub>-750F COLUMN

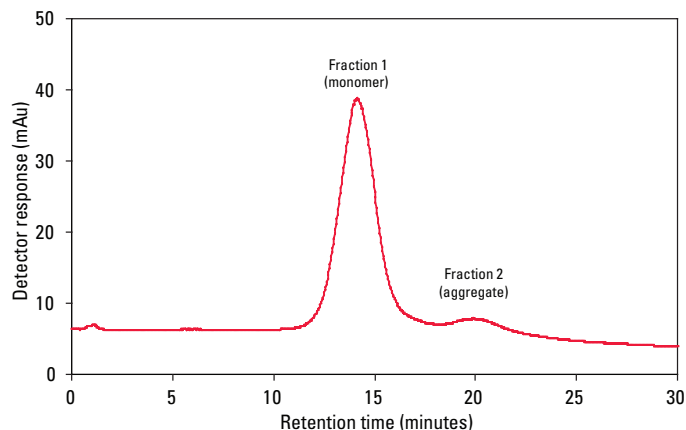


Figure 2

Resin: TOYOPEARL NH<sub>2</sub>-750F; Column: 5 mm ID × 5 cm L (1 mL); Mobile phase: A. 20 mmol/L Tris-HCl, pH 8.0, B. mobile phase A + 1 mol/L NaCl; Gradient: 0 – 100% B (60 minutes); Flow rate: 300 cm/h (1 mL/min); Detection: UV @ 280 nm; Sample: mAb (IgG<sub>1</sub>), 0.5 g/L

### SEC ANALYSIS OF PURIFIED mAb MONOMER FROM TOYOPEARL NH<sub>2</sub>-750F (FRACTION 1)

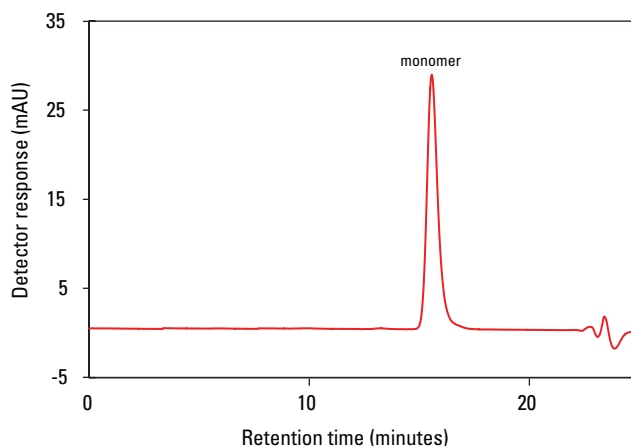


Figure 3

Column: TSKgel G3000SW<sub>XL</sub>, 7.8 mm ID × 30 cm L; Mobile phase: A. 0.1 mol/L sodium phosphate, 0.2 mol/L arginine, pH 6.8; Flow rate: 0.5 mL/min; Detection: UV @ 280 nm; Sample: fraction 1, mAb monomer peak

### SEC ANALYSIS OF mAb AGGREGATE PEAK FROM TOYOPEARL NH<sub>2</sub>-750F (FRACTION 2)

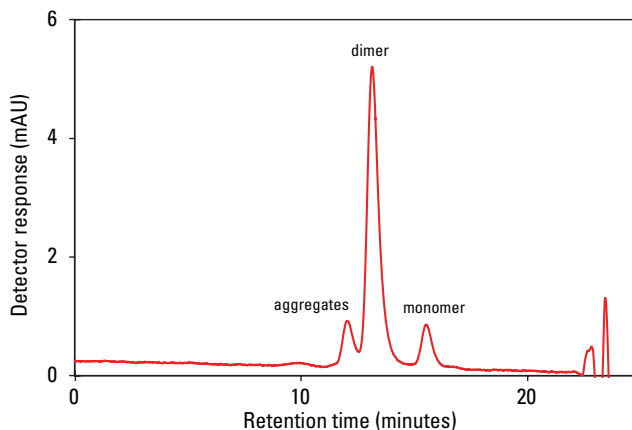


Figure 4

Column: TSKgel G3000SW<sub>XL</sub>, 7.8 mm ID × 30 cm L; Mobile phase: 0.1 mol/L sodium phosphate + 0.1 mol/L sodium sulfate, pH 6.7; Flow rate: 1 ml/min; Detection: UV @ 280 nm; Sample: 100 µl of each fraction

With courtesy of



TOSOH BIOSCIENCE ©

## Headquarters

JSB International  
Tramstraat 15  
5611 CM Eindhoven  
T +31 (0) 40 251 47 53  
F +31 (0) 40 251 47 58

Zoex Europe  
Tramstraat 15  
5611 CM Eindhoven  
T +31 (0) 40 257 39 72  
F +31 (0) 40 251 47 58

## Sales and Service

Netherlands  
Apolloweg 2B  
8239 DA Lelystad  
T +31 (0) 320 87 00 18  
F +31 (0) 320 87 00 19

Belgium  
Grensstraat 7  
Box 3 1831 Diegem  
T +32 (0) 2 721 92 11  
F +32 (0) 2 720 76 22

Germany  
Max-Planck-Strasse 4  
D-47475 Kamp-Lintfort  
T +49 (0) 28 42 9280 799  
F +49 (0) 28 42 9732 638

UK & Ireland  
Cedar Court,  
Grove Park Business Est.  
White Waltham, Maidenhead  
Berks, SL6 3LW  
T +44 (0) 16 288 220 48  
F +44 (0) 70 394 006 78

info@go-jsb.com  
www.go-jsb.com

